

PARTS CATALOG

T9.615 / T9.670
4WD Tractor

Print No. 84368005
9/2011



PARTS CATALOG

T9.615 / T9.670
4WD Tractor

Print No. 84368005
9/2011



NEW HOLLAND

AGRICULTURE

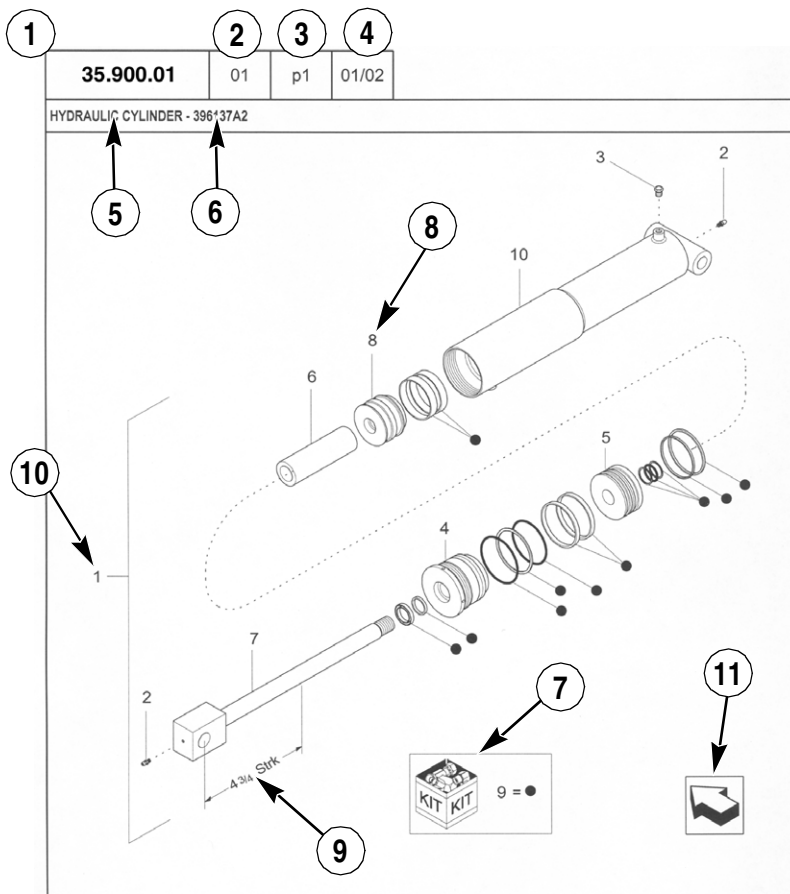


GENERAL INFORMATION

1. Whenever the terms left and right are used, it should be understood to mean from a position facing in direction of travel.
2. Throughout this manual you may find common hardware not illustrated, but listed in the description column. The service part immediately preceding a hardware listing is the part using these particular items for mounting purposes. This hardware is not included with the service part or assembly when ordered as a replacement.
3. The illustrations show typical assemblies plus individual parts but in all cases may not show the exact shape or detail of parts required. However, the purpose for the illustrations is to identify parts performing like functions. Whenever possible illustrations are located at the beginning of each section or immediately adjacent to the applicable text.
4. CNH America LLC is continually striving to improve its products. We must, therefore, reserve the right to make improvements or changes when it becomes practical and possible to do so, without incurring any obligation to make changes or additions to the equipment sold previously.

CNH America LLC, Racine, WI 53404 U.S.A.

How to Use Your Parts Catalog



HYDRAULIC CYLINDER - 396137A2					
REF	FN	PART NUMBER	YR/SN	QTY	DESCRIPTION
1	1	396137A2	BTW 01/85 & 02/02	1	CYLINDER ASSY. 4-3/4 in strk, Inc 2-10
2		31-95	Before 01/85	2	FITTING
2		219-8	From 01/85	2	NIPPLE, LUBE Grease, 1/4 tpr x 17/32
3		{402475A2}		1	BREATHER
4		402474A1		1	CAP CYLINDER END
5		402468A1	BSN JJC0189200	1	PISTON ROD/GLAND
5		145221C3	ASN JJC0189200	1	PISTON
6		402471A1		1	SPACER
7		402473A1		1	ROD, PISTON
8		402469A1		1	PISTON ROD/GLAND
9		402476A1		1	PACKAGE, SEALS
10		NSS		1	NOT SERVICED SEPARAT CASE ASSEMBLY
(1) 08-20					
STANDARD			MODELS		

How to Use Your Parts Catalog

1. Figure Number
2. Sequence code within the Figure Number
3. Page number within the Sequence Code
4. Date of Printing (month / year)
5. Figure Description
6. General information regarding the figure
7. Parts supplied in repair kits per symbol reference
8. Figure call-out of the part number (REF)
9. Technical Specifications relating to the part indicated
10. Figure call-out includes bracketed items, the included items may also be listed in the additional description area
11. Orientation - Arrow indicates front of the machine
12. Footnote - Additional information relating to the part number. In this example, 08-20 equals another figure that this part is shown on.
13. Part Number
 - NSS = Non-serviced parts
 - Bracketed numbers = not available as service parts in this market
14. Not Available as service part in this market
15. YR/SN
 - Year
 - Before 01/85 = Part valid for production January 1985 and before
 - From 01/85 = Part valid for production from January 1985 and after
 - BTW 01/85 & 02/02 = Part valid for machines produced between January 1985 and February 2002.
 - Serial Number (P.I.N.)
 - BSN JJC0268800 = Part valid for serial number JJC0268800 and below
 - ASN JJC0268800 = Part valid for serial number JJC0268800 and above
 - BTW JJC0178000 & JJC0179000 = Part valid for serial numbers between JJC0178000 & JJC0179000
16. Total Quantity of the Part referred to in the page. The quantity can be replaced by the following indications:
 - AR = quantity as required
 - X = as required
17. Part Description
18. Additional description of the part to help confirm identification
19. Figure Notes
20. Model Number(s)

Explanation of Abbreviations

Abbreviation	Meaning
adj	adjustable
amp	ampere
AR	As required
ASN	Serial number and after / P.I.N. and after
barb	barb
blkhd	bulkhead
boss	boss
BSN	before serial number / before P.I.N
BTW	between
cc	cubic centimetre
chain	chain
cl	class
cp pt	cup point
CRS	Chrome Alloy Steel
CST	Carbon Steel
cu yd	cubic yard
deg	degree
dia	diameter
dr type	drive type
dry	dry
fc	face
fc sl	face seal
fem	female
fem PT	female pipe thread
fl	flare
ft	feet (or foot)
gal	gallon(s)
gr	grade
hd	head
hp	horsepower
ID	inside diameter

Abbreviation	Meaning
in	inch(es)
Inc.	includes
inv fl	inverted flare
K	kilo
kg	kilogram
L	litre
lb	pound(s)
lg	long
LH	left hand
LH thd	left hand thread
links	links
M	(prefix) metric thread size
m	metre
male	male
mm	millimetre
NF	National Fine
No.	number
NS	National Super Fine
OD	outside diameter
ohm	electrical unit of resistance
Or	O-ring
orifice	orifice
P	pitch
piece	piece
psi	pounds per square inch
PT	pipe thread
rd	round
rd holes	round holes
RH	right hand
RH thd	right hand thread
rpm	revolutions per minute

Explanation of Abbreviations

Abbreviation	Meaning
sl	self locking
slat	slat
spool	spool
sq	square
SST	Stainless Steel
st	self tapping
stem	stem
strk	stroke
sw	swivel
T	teeth
Teflon	Teflon
thin	thin
thk	thick
tpr	taper

Abbreviation	Meaning
tube	tube
type	type
V	volt(s)
W	watt(s)
way	way
wide	wide
X	as required
yd	yard

Dimensions

Metric and U.S. hardware dimensions do not show the numeric designations of standard coarse threads. A number following a semi colon (;) is the class or grade of hardware. A comma (,) represents the decimal point (.) used in U.S. dimensions.



TABLE OF CONTENTS

00.000.00		PICTORIAL INDEX-MAIN FRONT
00.000.01		PICTORIAL INDEX-MAIN-REAR
00.000.02		PICTORIAL INDEX-CHASSIS
05.100.01		FILTERS AND CAPACITIES
05.102.01		ARTICULATION LOCKS
05.102.02		FIRE EXTINGUISHER MOUNTING (EUROPE)
05.500.00	01	INITIAL STOCKING LIST "A" (ISL)
05.500.00	02	INITIAL STOCKING LIST "B" (ISL)
10.000.00		PICTORIAL INDEX-ENGINE
10.001.03		HEATER - ENGINE BLOCK
10.012.01		ENGINE MOUNTS
10.202.02	01	AIR INTAKE
10.202.02	02	AIR INTAKE
10.202.02	03	AIR INTAKE
10.202.05		AIR CLEANER & PLENUM
10.202.06		AIR CLEANER & FILTERS
10.206.02		FILTER - FUEL, WITH WIF SENSOR
10.214.02	01	FUEL LINES, LIFT PUMP & COOLER, FRONT
10.214.02	02	FUEL LINES, FILTER, & SIGHT GAUGE, REAR
10.216.01		FUEL TANKS / REAR FENDERS - T9.670
10.400.02		ENGINE COOLING SYSTEM
10.406.01		RADIATOR & COOLERS
10.414.01		HYDRAULIC FAN, MOTOR, & ATTACHMENTS
10.480.01		HYDRAULIC FAN PLUMBING
10.500.01	01	SCR TANK AND PLUMBING
10.500.01	02	DEF/SCR TANK
10.500.04		SCR EXHAUST
10.500.05		EXHAUST, TIER 2 (NO SCR) - T9.615 AND T9.670
10.500.07		SCR WIRING AND DENOX2 MODULE
10.500.09		HEAT SHIELD, SCR EXHAUST (EUROPE)
14.100.01		LUBE - HYDRAULIC PUMP DRIVE WITHOUT PTO
14.100.02		LUBE - HYDRAULIC PUMP DRIVE WITH PTO
14.100.04		LUBE - PTO TRANSFER CASE
14.102.01		HYDRAULIC PUMP DRIVE WITH & WITHOUT PTO - MOUNTING & VALVES
14.102.02	01	HYDRAULIC PUMP DRIVE WITHOUT PTO - HOUSING COVERS AND SERVO
14.102.02	02	HYDRAULIC PUMP DRIVE WITH PTO - AUXILIARY DRIVE COVER
14.102.03		HYDRAULIC PUMP DRIVE WITH PTO - HOUSING COVERS, SERVO, AND YOKE
14.102.04		HYDRAULIC PUMP DRIVE WITH & WITHOUT PTO - IDLER SHAFT, INPUT SHAFT, OUTPUT SHAFT, & DRIVE GEAR
14.102.05		HYDRAULIC PUMP DRIVE WITH PTO - INPUT CLUTCH SHAFT
14.102.06		PTO - TRANSFER CASE MOUNTING
14.102.07		PTO - TRANSFER CASE
14.102.08		PTO DRIVELINES AND MOUNTING (NORTH AMERICA)
14.102.09		PTO DRIVELINES AND MOUNTING (EUROPE)
14.102.10		PTO DRIVELINES & HANGER BEARING ASSEMBLIES
21.105.01		POWER SHIFT TRANSMISSION - LUBRICATION
21.105.02		POWER SHIFT TRANSMISSION - OIL FILTER
21.109.01		TRANSMISSION OIL COOLER & HOSES
21.109.02		TRANSMISSION TO COOLER LINES
21.113.01		POWER SHIFT TRANSMISSION - TRANSMISSION MOUNTING

TABLE OF CONTENTS

21.113.02		POWER SHIFT TRANSMISSION - REAR HOUSING, YOKES, AND RETAINERS, PS4, 8.5C
21.113.03		POWER SHIFT TRANSMISSION - REAR HOUSING, YOKES, AND RETAINERS, PS6, 9C
21.113.04		POWER SHIFT TRANSMISSION - FRONT HOUSING
21.113.05		POWER SHIFT TRANSMISSION - FRONT HOUSING YOKES AND RETAINERS, PS4, 8.5C
21.113.06		POWER SHIFT TRANSMISSION - FRONT HOUSING YOKES AND RETAINERS, PS6, 9C
21.135.01		POWER SHIFT TRANSMISSION - VALVE MOUNTING
21.135.02		POWER SHIFT TRANSMISSION - REGULATOR VALVE
21.135.03		POWER SHIFT TRANSMISSION - RANGE SELECTOR VALVE
21.155.01		POWER SHIFT TRANSMISSION - SHAFT ASSEMBLIES AND CLUTCHES, PS4, 8.5C
21.155.02		POWER SHIFT TRANSMISSION - SHAFT ASSEMBLIES AND CLUTCHES, PS6, 9C
21.155.03	01	POWER SHIFT TRANSMISSION - 1ST INPUT SHAFT, PS4, 8.5C
21.155.03	02	POWER SHIFT TRANSMISSION - 1ST INPUT SHAFT, PS4, 8.5C
21.155.04	01	POWER SHIFT TRANSMISSION - 1ST INPUT SHAFT, PS6, 9C
21.155.04	02	POWER SHIFT TRANSMISSION - 1ST INPUT SHAFT, PS6, 9C
21.155.05		POWER SHIFT TRANSMISSION - 2ND SHAFT, PS4, 8.5C
21.155.06		POWER SHIFT TRANSMISSION - 2ND SHAFT, PS6, 9C
21.155.07		POWER SHIFT TRANSMISSION - 4TH SHAFT, PS4, 8.5C
21.155.08		POWER SHIFT TRANSMISSION - 4TH SHAFT, PS6, 9C
21.155.09		POWER SHIFT TRANSMISSION - 5TH OUTPUT SHAFT, PS4, 8.5C
21.155.10		POWER SHIFT TRANSMISSION - 5TH OUTPUT SHAFT, PS6, 9C
21.300.02	01	DRIVESHAFT MOUNTING - WITH 8.5C TRANSMISSION - T9.615
21.300.02	02	DRIVESHAFTS - WITH 8.5C TRANSMISSION - T9.615
21.300.03	01	DRIVESHAFT MOUNTING - 500 SERIES AXLE WITH 8.5C OR 9C TRANSMISSION - T9.615 & T9.670
21.300.03	02	DRIVESHAFTS - 500 SERIES AXLE WITH 8.5C OR 9C TRANSMISSION - T9.615 & T9.670
21.300.04	01	DRIVESHAFT MOUNTING - 600 SERIES AXLE WITH 9C TRANSMISSION - T9.670
21.300.04	02	DRIVESHAFTS - 600 SERIES AXLE WITH 9C TRANSMISSION - T9.670
33.110.01		PARK BRAKE - HYDRAULICS (NORTH AMERICA)
33.110.03		PARK BRAKE - HYDRAULICS (EUROPE)
33.110.05		PARK BRAKE - VALVE ASSEMBLY AND FITTINGS, TOW/PARK BRAKE (NORTH AMERICA)
33.110.06		PARK BRAKE - VALVE ASSEMBLY AND FITTINGS, TOW/PARK BRAKE (EUROPE)
33.110.08		PARK BRAKE - VALVE ASSEMBLY, TOW/PARK BRAKE (EUROPE)
33.110.09		PARK BRAKE - VALVE COMPONENTS, TOW/PARK BRAKE (EUROPE)
33.110.10		PARK BRAKE - VALVE COMPONENTS, TOW/PARK BRAKE (EUROPE)
33.202.01		BRAKE VALVE - HIGH PRESSURE
33.220.08		TRAILER BRAKES - HYDRAULIC LAYOUT
35.105.01		HYDRAULIC PUMP - AXLE / MAIN CHARGE
35.106.01		HYDRAULIC PUMP, VARIABLE DISPLACEMENT
35.106.02		HYDRAULIC PUMP MOUNTING & FITTINGS - STANDARD HYDRAULICS
35.106.03		HYDRAULIC PUMP - STANDARD HYDRAULICS - PISTON PUMP, 71CC
35.106.04		HYDRAULIC PUMP MOUNTING & FITTINGS - HIGH OUTPUT HYDRAULICS
35.106.05		HYDRAULIC PUMP - HIGH OUTPUT HYDRAULICS - PISTON PUMP, 100CC
35.106.06		HYDRAULIC PUMP - MEGAFLOW, 85CC
35.116.01		CYLINDER ASSY - THREE POINT HITCH
35.120.01		THREE POINT HITCH

TABLE OF CONTENTS

35.120.02		THREE POINT HITCH - ROCKERSHAFT
35.120.03		THREE POINT HITCH - UPPER LINK, WITHOUT POWER TAKEOFF
35.120.04		THREE POINT HITCH - UPPER LINK, WITH POWER TAKEOFF
35.120.05		LINK ASSEMBLY - UPPER
35.120.06		LINK ASSEMBLY - LIFT
35.120.07		QUICK HITCH
35.120.08		THREE POINT HITCH - HYDRAULIC PLUMBING
35.128.02	01	500 & 600 SERIES WHEELED AXLE - AXLE LUBE FRONT, WITH AND WITHOUT DIFFERENTIAL LOCK
35.128.02	02	500 & 600 SERIES WHEELED AXLE - AXLE LUBE REAR, WITH AND WITHOUT DIFFERENTIAL LOCK
35.204.01		AUXILIARY VALVE STACK - 4 SPOOL
35.204.02		AUXILIARY VALVE STACK - 4 SPOOL - SCRAPER UNITS - T9.615
35.204.03		AUXILIARY VALVE STACK - 4 SPOOL, W/ THREE POINT HITCH
35.204.04		AUXILIARY VALVE STACK - 4 SPOOL, W/ TRAILER BRAKES
35.204.05		AUXILIARY VALVE STACK - 4 SPOOL, W/ TRAILER BRAKES - SCRAPER UNITS - T9.615
35.204.06		AUXILIARY VALVE STACK - 4 SPOOL, W/ THREE POINT HITCH & TRAILER BRAKES
35.204.07		AUXILIARY VALVE STACK - 6 SPOOL
35.204.08		AUXILIARY VALVE STACK - 6 SPOOL, W/ THREE POINT HITCH
35.204.09		AUXILIARY VALVE STACK - 6 SPOOL, W/ TRAILER BRAKES
35.204.10		AUXILIARY VALVE STACK - 6 SPOOL, W/ THREE POINT HITCH & TRAILER BRAKES
35.204.11		AUXILIARY VALVE STACK - 8 SPOOL
35.204.12		AUXILIARY VALVE STACK - 8 SPOOL, W/ TRAILER BRAKES
35.204.13		VALVE ASSEMBLY - AUXILIARY - MAIN, RIGHT, & LEFT
35.204.14		VALVE ASSEMBLY - TRAILER BRAKE / PRIORITY
35.204.15		VALVE ASSEMBLY - THREE POINT HITCH
35.204.16		VALVE ASSEMBLY - CONNECTOR
35.204.17		VALVE COUPLER ASSEMBLY
35.204.18		VALVE COUPLER ASSEMBLY - SCRAPER UNITS
35.204.19		POWER BEYOND COUPLERS
35.204.20		LOW PRESSURE RETURN
35.204.21		MEGA/TWIN FLOW PLUGS
35.204.22		DRAIN HOSES - AUXILIARY VALVE STACK - 4, 6, & 8 SPOOL
35.204.23		DRAIN BOTTLES - AUXILIARY VALVE STACK - 4, 6, & 8 SPOOL
35.220.01	01	REMOTE HYDRAULIC HOSES
35.220.01	02	REMOTE HYDRAULIC HOSES
35.300.01		HYDRAULICS - FILTER, FILTER SUPPORT, & PLUMBING, STANDARD FLOW
35.300.02		HYDRAULICS - FILTER, FILTER SUPPORT, & PLUMBING, HIGH FLOW
35.300.05		HYDRAULICS - FILTER & FILTER HEAD
35.300.06		COOLER - HYDRAULIC OIL & HOSES
35.300.07		HYDRAULIC OIL TANK
35.300.09		STANDARD HYDRAULICS - PUMP LUBRICATION CIRCUIT
35.300.10		HIGH OUTPUT HYDRAULICS - PUMP LUBRICATION CIRCUIT
35.322.01		HIGH FLOW HYDRAULICS - HOSES & PUMP
35.962.01		SOLENOID VALVE, DIFFERENTIAL LOCK
35.962.02		CHARGE RELIEF VALVE
35.962.03		COOLER BYPASS VALVE
37.100.01		DRAWBAR - HEAVY DUTY, WITHOUT THREE POINT HITCH
37.100.02		DRAWBAR - HEAVY DUTY, WITH THREE POINT HITCH
37.100.02	01	DRAWBAR - STANDARD - T9.560

TABLE OF CONTENTS

37.100.03		DRAWBAR - CATEGORY 5, WITHOUT THREE POINT HITCH
37.100.04		DRAWBAR - CATEGORY 5, WITH THREE POINT HITCH
37.100.05		DRAWBAR - QUICK HITCH - SCRAPER - T9.615
37.100.07		TOW CABLE
37.140.01		WHEEL WEIGHTS - 500 & 1000 LBS.
37.140.02		WHEEL WEIGHTS - 900 & 1600 LBS
37.140.03		FRONT BUMPER
37.140.04		BALLAST PACK - FRONT FRAME WEIGHT
37.140.05		BALLAST PACK - REAR FRAME WEIGHT
39.100.01		FRONT FRAME - WITHOUT SUSPENDED CAB
39.100.02		FRONT FRAME - WITH SUSPENDED CAB
39.100.05		REAR FRAME / FUEL TANK AND FENDERS - T9.615
39.100.06		REAR FRAME / FUEL TANKS AND FENDERS - T9.670
39.100.09		AUXILIARY VALVE MOUNT & OPTIONAL PTO BRACKET - WITHOUT PTO & THREE POINT HITCH
39.127.01		CENTER CONNECTING LINK
41.200.01	01	STEERING - HYDRAULIC CONTROL
41.200.01	02	STEERING - HYDRAULIC CONTROL
41.200.01	03	STEERING - HYDRAULIC CONTROL
41.204.01		STEERING WHEEL
41.204.02		STEERING COLUMN
41.204.03		STEERING COLUMN CONTROLS
41.204.04		STEERING - CONTROL VALVE
41.216.01		STEERING CYLINDER, ATTACHMENTS
41.216.02		STEERING CYLINDER - T9.615
41.216.03		STEERING CYLINDER - T9.670
41.920.01		AUTOGUIDANCE - VALVE, VALVE FITTINGS, & PLUMBING
41.920.03		NON-AUTOGUIDANCE - VALVE, VALVE FITTINGS, & PLUMBING
41.930.01		CONTROL VALVE - PRIORITY / STEERING
44.100.01	01	FRONT AXLE MOUNTING
44.100.01	02	REAR AXLE MOUNTING
44.100.09		500 SERIES AXLE - FRONT COVER - T9.615 & T9.670
44.100.10		500 SERIES AXLE - REAR COVER - T9.615 & T9.670
44.100.11		500 SERIES AXLE - CENTER AND LEFT-HAND CARRIER - T9.615 & T9.670
44.100.13		500 SERIES AXLE - DIFFERENTIAL, WITHOUT DIFFERENTIAL LOCK - T9.615 & T9.670
44.100.14		500 SERIES AXLE - DIFFERENTIAL, WITH DIFFERENTIAL LOCK - T9.615 & T9.670
44.100.15		500 SERIES AXLE - BRAKE AND RIGHT-HAND CARRIER - T9.615 & T9.670
44.100.17		500 SERIES AXLE - FINAL DRIVE - T9.615 & T9.670
44.100.19		600 SERIES AXLE - FRONT COVER - T9.670
44.100.20		600 SERIES AXLE - REAR COVER - T9.670
44.100.21		600 SERIES AXLE - CENTER AND LEFT-HAND CARRIER - T9.670
44.100.23		600 SERIES AXLE - DIFFERENTIAL, WITHOUT DIFFERENTIAL LOCK - T9.670
44.100.24		600 SERIES AXLE - DIFFERENTIAL, WITH DIFFERENTIAL LOCK - T9.670
44.100.25		600 SERIES AXLE - BRAKE AND RIGHT-HAND CARRIER - T9.670
44.100.27		600 SERIES AXLE - FINAL DRIVE - T9.670
44.100.29		AXLE LUBE MANIFOLD - 500 & 600 SERIES AXLES
44.100.31		HUBS & WHEEL MOUNTING, 115MM AXLE - 500 SERIES AXLE
44.100.32		HUBS & WHEEL MOUNTING, 140MM AXLE - 600 SERIES AXLE
44.100.33		WHEEL SPACERS - 115MM AXLE, 10-BOLT HUB - 500 SERIES AXLE
44.100.34		WHEEL SPACERS - 140MM AXLE, 18-BOLT HUB - 600 SERIES AXLE

TABLE OF CONTENTS

44.511.01		WHEELS AND SPACERS - 115MM AXLE, 10-BOLT HUB - 500 SERIES AXLE
44.511.02		WHEELS - DUAL HUB
44.511.03		WHEELS AND SPACERS - 140MM AXLE, 18-BOLT HUB - 600 SERIES AXLE
44.511.04		WHEELS - TRIPLES
50.100.02		HEATER HOSES
50.200.01		AIR CONDITIONING - PLUMBING, COMPRESSOR, RECEIVER-DRYER
50.206.01		HVAC AND CONTROLS
50.206.02		HVAC AUTOMATIC TEMPERATURE CONTROL UNIT
50.206.03		CAB AIR CLEANER HOUSING AND FILTER
50.206.04		HVAC CAB AIR BLOWER
50.206.05		FRONT CONSOLE HVAC - AIR DUCT, LOUVERS, AND INSULATION
55.100.02	01	BATTERY CABLES
55.100.02	02	BATTERY CABLES
55.100.03		ENGINE HARNESS GROUP
55.100.04		HARNESS - ENGINE
55.100.05	01	HARNESS - TRANSMISSION LAYOUT
55.100.05	02	HARNESS - TRANSMISSION
55.100.06		HARNESSES - FRONT FRAME WIRING LAYOUT
55.100.08		HARNESS - FRONT FRAME (NORTH AMERICA)
55.100.09		HARNESS - FRONT FRAME (EUROPE)
55.100.10		HARNESS - HYDRAULIC SUB ASSEMBLY
55.100.11		HARNESS - WASHER BOTTLE
55.100.12		HARNESSES - REAR FRAME WIRING LAYOUT (NORTH AMERICA)
55.100.13		HARNESSES - REAR FRAME WIRING LAYOUT (EUROPE)
55.100.14		HARNESS - REAR FRAME (NORTH AMERICA)
55.100.15		HARNESS - REAR FRAME & TRAILER ADAPTER (EUROPE)
55.100.16		HARNESS - SCR CHASSIS
55.100.17		HARNESS - FRONT DASH
55.100.18		HARNESS - FRONT LOWER WIPERS, LUXURY CAB
55.100.19		HARNESS - CAB ROOF
55.100.20		HARNESS - ARMREST ELECTRIC ADJUST
55.100.21		HARNESS - AUXILIARY POWER
55.100.22	01	HARNESS - MAIN CAB - NORTH AMERICA
55.100.22	02	HARNESS - MAIN CAB - NORTH AMERICA
55.100.22	03	HARNESS - MAIN CAB - NORTH AMERICA
55.100.23	01	HARNESS - MAIN CAB - EUROPE
55.100.23	02	HARNESS - MAIN CAB - EUROPE
55.100.23	03	HARNESS - MAIN CAB - EUROPE
55.100.24		HARNESS - THREE POINT HITCH
55.100.25		HARNESSES - DIFFERENTIAL LOCK WIRING LAYOUT
55.100.26		HARNESS - CHASSIS LIGHTS
55.100.27		HARNESS - AUTO GUIDANCE, CAB & CHASSIS
55.100.28		HARNESS - DISPLAY
55.100.29		HARNESS - ISO, CHASSIS & CAB
55.100.30		HARNESS - GPS ANTENNA, ROOF & SUB-ROOF
55.100.31		HARNESS - FRONT & REAR MARKER LIGHTS (EUROPE)
55.100.32		PTO HARNESS AND GEAR SPEED SENSOR
55.100.33	01	HARNESS, SPOOL ADAPTER - EHR VALVES - 4 SPOOL
55.100.33	02	HARNESS, SPOOL ADAPTER - EHR VALVES - 5, 6, & 8 SPOOL
55.100.34		HARNESS - IMPLEMENT DEPTH CONTROLL HARNESS
55.100.35		HARNESS, BATTERY EQUALIZER, SCR, 24V SYSTEM

TABLE OF CONTENTS

55.301.01		ALTERNATOR
55.301.04		BATTERIES AND TRAY ASSEMBLY - T9.615 AND T9.670
55.301.06		POWER DISCONNECT - STARTER
55.301.07		POWER DISCONNECT - CAB
55.404.01		HEADLIGHTS - CHASSIS
55.404.02		HEADLIGHTS - EUROPE
55.404.03		TAIL LIGHTS - T9.615
55.404.04	01	TAIL LIGHTS (NORTH AMERICA) - T9.670
55.404.04	02	TAIL LIGHTS (EUROPE) - T9.670
55.404.05		REAR WORK LIGHTS
55.404.06		LATERAL HID WORK LIGHTS
55.404.07		MARKER LIGHTS, REAR (NORTH AMERICA)
55.404.08		MARKER LIGHTS (EUROPE)
55.404.09		WARNING LIGHTS - FRONT (EUROPE)
55.404.10		WARNING LIGHTS - REAR (EUROPE)
55.404.11		BEACON LIGHT - SINGLE
55.404.12		BEACON LIGHT - DUAL
55.408.01		BACK-AP ALARM
55.424.01		GROUND SPEED RADAR
55.440.01		ARMREST - ELECTRONIC CONTROLS & MONITORS
55.440.02		ARMREST - ELECTRONIC JOYSTICK W/ PROPORTIONAL ROCKER CONTROL
55.440.06		ARMREST CONTROLS - ELECTRIC ADJUST
55.440.07		FORWARD-NEUTRAL-REVERSE POD
55.440.08		FRONT CONSOLE SWITCHES - IGNITION & DIMMER
55.440.09		ELECTRONIC CONTROL UNIT (ECU)
55.440.10		INSTRUMENT CONTROL UNIT (ICU3)
55.440.11		THREE POINT HITCH - WIRING & SWITCHES
55.440.12		THREE POINT HITCH - REMOTE SWITCH
55.440.13		ISO INTERFACE & TECU CONTROLLER
55.510.01		CAB - MAIN ELECTRICAL
55.510.02		CAB - RIGHT OVERHEAD CONSOLE, SWITCHES AND RADIO
55.510.03		CAB - MAIN ELECTRONICS, HARNESS WITH FUSES AND RELAYS
55.510.04		SPEAKERS AND ANTENNA
55.510.05		BUSINESS BAND ANTENNA
55.510.06		EXTERIOR MIRRORS - ELECTRIC ADJUST
55.512.01		CLUTCH AND BRAKE CONTROL ELECTRONICS
55.512.01		CLUTCH AND BRAKE CONTROL ELECTRONICS
55.514.01		LIGHTING - CAB ROOF, EXTERIOR
55.514.02		LIGHTING - CAB ROOF, INTERIOR
55.518.01		WIPERS - STANDARD FRONT, REAR, RESERVOIR, & PLUMBING
55.518.02		WIPERS - LOWER FRONT & PLUMBING, LUXURY CAB
55.911.01		GPS RECEIVER - AFS262 WAAS/EGNOS/VBS
55.911.02		GPS RECEIVER - AFS262 WAAS/EGNOS/VBS/HP/XP
55.911.03		GPS RECEIVER - HARNESSES AND MOUNTING BRACKET
55.912.01		AUTO GUIDANCE - HARNESSES AND SENSORS
55.918.01		AFS MONITOR - FRED II LARGE TOUCHSCREEN DISPLAY
55.986.01		BATTERY EQUALIZER/CONVERTER
88.000.01		TOOL BOX AND MOUNTING
88.000.02		LIFE HAMMER (EUROPE)
88.005.01		DIA KIT - FIRE EXTINGUISHER
88.010.01		DIA KIT - ENGINE BLOCK HEATER, 120 VOLT

TABLE OF CONTENTS

88.010.02		DIA KIT - ENGINE BLOCK HEATER, 240 VOLT
88.010.04		DIA KIT - ENGINE BRAKE - CURSOR 13, 2-STAGE
88.014.01		DIA KIT - PTO (NON-EUROPE)
88.014.02		DIA KIT - PTO (EUROPE)
88.021.01		DIA KIT - TRANSMISSION HEATER, 120 V
88.021.02		DIA KIT - TRANSMISSION HEATER, 240 V
88.035.01		DIA KIT - ADDITIONAL (+1) EHR VALVE
88.035.05		DIA KIT - 4 TO 6 OR 8 EHR VALVES - CAB & ELECTRICAL COMPONENTS
88.035.06		DIA KIT - POWER BEYOND COUPLER & LOW PRESSURE MOTOR RETURN
88.035.07		DIA KIT - MEGAFLOW / TWINFLOW
88.035.09		DIA KIT - HYDRAULIC REMOTE OIL DRAIN BOTTLE
88.035.10		DIA KIT - AUXILIARY PUMP DRIVE
88.035.11		DIA KIT - 2ND CASE DRAIN
88.035.12		DIA KIT - THREE POINT HITCH, W/ ELECTRONIC REMOTES
88.035.13		DIA KIT - 3/4" COUPLER
88.035.16		DIA KIT - IMPLEMENT DEPTH CONTROL
88.037.01		DIA KIT - FRONT TOW HOOK
88.037.02		DIA KIT - SCRAPER REVERSE HITCH ADAPTER (STINGER)
88.037.03		DIA KIT - FRONT BUMPER BALLAST W/OUT SUITCASE WEIGHT MOUNTS
88.037.04		DIA KIT - FRONT BUMPER BALLAST W/ SUITCASE MOUNTS
88.037.05		DIA KIT - REAR FRAME BALLAST
88.037.06		DIA KIT - SUITCASE WEIGHT - 45 KG (100 LB)
88.037.07		DIA KIT - WHEEL WEIGHTS, 500 & 1000 LBS
88.037.08		DIA KIT - WHEEL WEIGHTS, 900 & 1600 LBS - T9.670
88.055.01		DIA KIT - LOWER FRONT WIPERS
88.055.02		DIA KIT - BACKUP ALARM
88.055.03		DIA KIT - ELECTRIC ARMREST ADJUSTMENT
88.055.04		DIA KIT - ELECTRIC MIRRORS - EXTERIOR
88.055.05		DIA KIT - ISO 11783 READY
88.055.06		DIA KIT - CAB POWER DISCONNECT
88.055.07		DIA KIT - AUTO GUIDANCE READY
88.055.08		DIA KIT - BUSINESS BAND ANTENNA
88.055.09		DIA KIT - RADIO, AM/FM/WB
88.055.10		DIA KIT - RADIO, AM/FM/WB/SINGLE CD
88.055.11		DIA KIT - GROUND SPEED RADAR
88.055.12		DIA KIT - DUAL BEACON LIGHT
88.055.13		DIA KIT - MARKER LIGHTS (NORTH AMERICA)
88.055.14		DIA KIT - REAR HID WORK LIGHTS
88.055.15		DIA KIT - LATERAL HID WORK LIGHTS
88.055.16		DIA KIT - HID HEADLIGHTS
88.055.17		DIA KIT - SMOKING PACKAGE
88.090.01		DIA KIT - MANUAL MIRRORS
88.090.02		DIA KIT - INSTRUCTIONAL SEAT, CLOTH
88.090.03		DIA KIT - "A" POST MONITOR MOUNT
88.090.04		DIA KIT - RH WINDOW MONITOR MOUNT
88.090.05		DIA KIT - FRED II DISPLAY READY
88.090.07		DIA KIT - DECELERATOR PEDAL
90.000.00		PICTORIAL INDEX-CAB
90.000.01		PICTORIAL INDEX- HOOD
90.100.01	01	ENGINE HOOD, GRILLE, AND SUPPORT
90.100.01	02	ENGINE HOOD, GRILLE, AND SUPPORT

TABLE OF CONTENTS

90.100.01	03	ENGINE HOOD, GRILLE, AND SUPPORT
90.100.02	01	ENGINE HOOD LATCH (NORTH AMERICA)
90.100.02	02	ENGINE HOOD LATCH (EUROPE)
90.100.03		ENGINE DEBRIS SCREENS
90.105.01		ACCESS DOOR AND PLATFORM ACCESS LADDER, RIGHT SIDE
90.108.01		DECALS - HOOD AND SADDLE TANK
90.108.03		DECALS - REMOTE VALVES, RIGHT AND LEFT
90.108.04		DECALS, NA/ AUS.
90.108.05		DECALS - N/A & AUS
90.108.06		DECALS, ISO
90.108.07		DECALS - ISO
90.112.01		CLUTCH AND BRAKE CONTROL PEDALS
90.112.02		DECELERATOR PEDAL
90.112.03		CABLE - TOW VALVE CONTROL
90.115.01		ARMREST
90.115.02		ARMREST - MECHANICAL ADJUST
90.115.03		ARMREST - MONITOR MOUNT
90.115.05		MONITOR MOUNT - BAR TO MONITOR
90.115.06		MONITOR MOUNT - RIGHT HAND WINDOW AND A-POST
90.116.01		FRONT FENDERS - RIGHT AND LEFT SIDE
90.116.03		REAR FENDERS AND SUPPORTS - RIGHT AND LEFT SIDE - T9.615
90.118.01		LADDER - DRIVER'S PLATFORM ACCESS, LEFT SIDE
90.118.04		EXTERIOR MIRRORS - MANUAL ADJUST
90.120.01		INSTRUCTIONAL SEAT
90.120.02		SEAT TEATHER KIT - SCRAPER VERSION - T9.615
90.124.01	01	SEAT - OPERATORS
90.124.01	02	SEAT - CUSHION ASSEMBLY
90.124.01	03	SEAT - POSITIVE RESPONSE SUSPENSION ASSEMBLY
90.124.01	04	SEAT COMPRESSOR KIT
90.124.01	05	SEAT COMPRESSOR SERVICE KIT
90.150.01		CAB MOUNTING, NON-SUSPENSION
90.150.03	01	CAB MOUNTING, SUSPENSION
90.150.03	02	CAB MOUNTING, SUSPENSION
90.150.04		CAB FRAME, NON-SUSPENDED
90.150.05		CAB FRAME, SUSPENDED
90.150.08	01	CAB SKIRTS - STANDARD, DELUXE CAB, NON-SUSPENDED
90.150.08	02	CAB SKIRTS - STANDARD, DELUXE CAB, SUSPENDED
90.150.09	01	CAB SKIRTS - LUXURY CAB, NON-SUSPENDED
90.150.09	02	CAB SKIRTS - LUXURY CAB, SUSPENDED
90.150.10		CAB ROOF
90.150.11		FOPS PLATE - T9.615
90.154.01		DOOR - LEFT HAND, INSTALLATION
90.154.02		DOOR - LEFT HAND, COMPONENTS
90.154.03		DOOR - RIGHT HAND, INSTALLATION
90.154.04		DOOR - RIGHT HAND, COMPONENTS
90.156.01		FRONT & REAR WINDOWS AND MOUNTING
90.160.01	01	INTERIOR TRIM, CAB - COVERS, PANELS, AND FASTENERS
90.160.01	02	INTERIOR TRIM, CAB - FLOORMATS, ACOUSTICAL BARRIERS, AND INSULATING FOAM
90.160.02	01	INTERIOR TRIM, DELUXE CAB - FLOORMATS AND TRANSMISSION COVER PLATE
90.160.02	02	INTERIOR TRIM, LUXURY CAB - FLOORMATS AND TRANSMISSION COVER PLATE

TABLE OF CONTENTS

90.160.03		INTERIOR TRIM, CAB - ELECTRICAL AREA & NON-TRAINER SEAT COVERS
90.160.04		HEADLINER - WITH BLINDS, INSERTS, CONSOLE AND MIRROR
90.160.04	01	HEADLINER - STANDARD
90.160.05		FRONT CONSOLE AND SUPPORT

ALPHABETICAL INDEX	FIGURE	SEQ.
500 & 600 SERIES WHEELED AXLE - AXLE LUBE FRONT, WITH AND WITHOUT DIFFERENTIAL LOCK	35.128.02	01
500 & 600 SERIES WHEELED AXLE - AXLE LUBE REAR, WITH AND WITHOUT DIFFERENTIAL LOCK	35.128.02	02
500 SERIES AXLE - BRAKE AND RIGHT-HAND CARRIER - T9.615 & T9.670	44.100.15	
500 SERIES AXLE - CENTER AND LEFT-HAND CARRIER - T9.615 & T9.670	44.100.11	
500 SERIES AXLE - DIFFERENTIAL, WITH DIFFERENTIAL LOCK - T9.615 & T9.670	44.100.14	
500 SERIES AXLE - DIFFERENTIAL, WITHOUT DIFFERENTIAL LOCK - T9.615 & T9.670	44.100.13	
500 SERIES AXLE - FINAL DRIVE - T9.615 & T9.670	44.100.17	
500 SERIES AXLE - FRONT COVER - T9.615 & T9.670	44.100.09	
500 SERIES AXLE - REAR COVER - T9.615 & T9.670	44.100.10	
600 SERIES AXLE - BRAKE AND RIGHT-HAND CARRIER - T9.670	44.100.25	
600 SERIES AXLE - CENTER AND LEFT-HAND CARRIER - T9.670	44.100.21	
600 SERIES AXLE - DIFFERENTIAL, WITH DIFFERENTIAL LOCK - T9.670	44.100.24	
600 SERIES AXLE - DIFFERENTIAL, WITHOUT DIFFERENTIAL LOCK - T9.670	44.100.23	
600 SERIES AXLE - FINAL DRIVE - T9.670	44.100.27	
600 SERIES AXLE - FRONT COVER - T9.670	44.100.19	
600 SERIES AXLE - REAR COVER - T9.670	44.100.20	
ACCESS DOOR AND PLATFORM ACCESS LADDER, RIGHT SIDE	90.105.01	
AFS MONITOR - FRED II LARGE TOUCHSCREEN DISPLAY	55.918.01	
AIR CLEANER & FILTERS	10.202.06	
AIR CLEANER & PLENUM	10.202.05	
AIR CONDITIONING - PLUMBING, COMPRESSOR, RECEIVER-DRYER	50.200.01	
AIR INTAKE	10.202.02	01
AIR INTAKE	10.202.02	02
AIR INTAKE	10.202.02	03
ALTERNATOR	55.301.01	
ARMREST	90.115.01	
ARMREST - ELECTRONIC CONTROLS & MONITORS	55.440.01	
ARMREST - ELECTRONIC JOYSTICK W/ PROPORTIONAL ROCKER CONTROL	55.440.02	
ARMREST - MECHANICAL ADJUST	90.115.02	
ARMREST - MONITOR MOUNT	90.115.03	
ARMREST CONTROLS - ELECTRIC ADJUST	55.440.06	
ARTICULATION LOCKS	05.102.01	
AUTO GUIDANCE - HARNESSSES AND SENSORS	55.912.01	
AUTOGUIDANCE - VALVE, VALVE FITTINGS, & PLUMBING	41.920.01	
AUXILIARY VALVE MOUNT & OPTIONAL PTO BRACKET - WITHOUT PTO & THREE POINT HITCH	39.100.09	
AUXILIARY VALVE STACK - 4 SPOOL	35.204.01	
AUXILIARY VALVE STACK - 4 SPOOL - SCRAPER UNITS - T9.615	35.204.02	
AUXILIARY VALVE STACK - 4 SPOOL, W/ THREE POINT HITCH	35.204.03	
AUXILIARY VALVE STACK - 4 SPOOL, W/ THREE POINT HITCH & TRAILER BRAKES	35.204.06	
AUXILIARY VALVE STACK - 4 SPOOL, W/ TRAILER BRAKES	35.204.04	
AUXILIARY VALVE STACK - 4 SPOOL, W/ TRAILER BRAKES - SCRAPER UNITS - T9.615	35.204.05	
AUXILIARY VALVE STACK - 6 SPOOL	35.204.07	
AUXILIARY VALVE STACK - 6 SPOOL, W/ THREE POINT HITCH	35.204.08	
AUXILIARY VALVE STACK - 6 SPOOL, W/ THREE POINT HITCH & TRAILER BRAKES	35.204.10	

AUXILIARY VALVE STACK - 6 SPOOL, W/ TRAILER BRAKES	35.204.09	
AUXILIARY VALVE STACK - 8 SPOOL	35.204.11	
AUXILIARY VALVE STACK - 8 SPOOL, W/ TRAILER BRAKES	35.204.12	
AXLE LUBE MANIFOLD - 500 & 600 SERIES AXLES	44.100.29	
BACK-AP ALARM	55.408.01	
BALLAST PACK - FRONT FRAME WEIGHT	37.140.04	
BALLAST PACK - REAR FRAME WEIGHT	37.140.05	
BATTERIES AND TRAY ASSEMBLY - T9.615 AND T9.670	55.301.04	
BATTERY CABLES	55.100.02	02
BATTERY CABLES	55.100.02	01
BATTERY EQUALIZER/CONVERTER	55.986.01	
BEACON LIGHT - DUAL	55.404.12	
BEACON LIGHT - SINGLE	55.404.11	
BRAKE VALVE - HIGH PRESSURE	33.202.01	
BUSINESS BAND ANTENNA	55.510.05	
CAB - MAIN ELECTRICAL	55.510.01	
CAB - MAIN ELECTRONICS, HARNESS WITH FUSES AND RELAYS	55.510.03	
CAB - RIGHT OVERHEAD CONSOLE, SWITCHES AND RADIO	55.510.02	
CAB AIR CLEANER HOUSING AND FILTER	50.206.03	
CAB FRAME, NON-SUSPENDED	90.150.04	
CAB FRAME, SUSPENDED	90.150.05	
CAB MOUNTING, NON-SUSPENSION	90.150.01	
CAB MOUNTING, SUSPENSION	90.150.03	01
CAB MOUNTING, SUSPENSION	90.150.03	02
CAB ROOF	90.150.10	
CAB SKIRTS - LUXURY CAB, NON-SUSPENDED	90.150.09	01
CAB SKIRTS - LUXURY CAB, SUSPENDED	90.150.09	02
CAB SKIRTS - STANDARD, DELUXE CAB, NON-SUSPENDED	90.150.08	01
CAB SKIRTS - STANDARD, DELUXE CAB, SUSPENDED	90.150.08	02
CABLE - TOW VALVE CONTROL	90.112.03	
CENTER CONNECTING LINK	39.127.01	
CHARGE RELIEF VALVE	35.962.02	
CLUTCH AND BRAKE CONTROL ELECTRONICS	55.512.01	
CLUTCH AND BRAKE CONTROL ELECTRONICS	55.512.01	
CLUTCH AND BRAKE CONTROL PEDALS	90.112.01	
CONTROL VALVE - PRIORITY / STEERING	41.930.01	
COOLER - HYDRAULIC OIL & HOSES	35.300.06	
COOLER BYPASS VALVE	35.962.03	
CYLINDER ASSY - THREE POINT HITCH	35.116.01	
DECALS - HOOD AND SADDLE TANK	90.108.01	
DECALS - ISO	90.108.07	
DECALS - N/A & AUS	90.108.05	
DECALS - REMOTE VALVES, RIGHT AND LEFT	90.108.03	
DECALS, ISO	90.108.06	
DECALS, NA/ AUS.	90.108.04	
DECELERATOR PEDAL	90.112.02	
DEF/SCR TANK	10.500.01	02
DIA KIT - "A" POST MONITOR MOUNT	88.090.03	
DIA KIT - 2ND CASE DRAIN	88.035.11	
DIA KIT - 3/4" COUPLER	88.035.13	
DIA KIT - 4 TO 6 OR 8 EHR VALVES - CAB & ELECTRICAL COMPONENTS	88.035.05	
DIA KIT - ADDITIONAL (+1) EHR VALVE	88.035.01	
DIA KIT - AUTO GUIDANCE READY	88.055.07	
DIA KIT - AUXILIARY PUMP DRIVE	88.035.10	
DIA KIT - BACKUP ALARM	88.055.02	
DIA KIT - BUSINESS BAND ANTENNA	88.055.08	
DIA KIT - CAB POWER DISCONNECT	88.055.06	

**Thanks very much for your reading,
Want to get more information,
Please click here, Then get the complete
manual**

JustClickHere 

NOTE:

**If there is no response to click on the link above,
please download the PDF document first, and then
click on it.**

**Have any questions please write to me:
admin@servicemanualperfect.com**